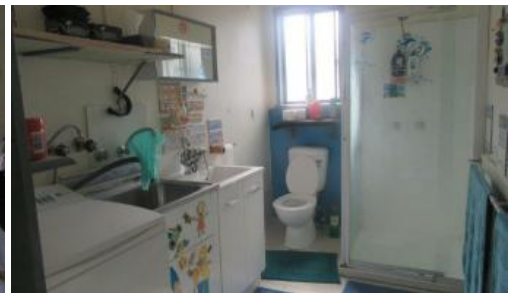




**6 Bowman St, Corinella**



## PRIME LOCATION ONLY METRES TO THE ESPLANADE!!!

See the water from your driveway!!!!!!

This is a great opportunity to get into the Corinella market at a very affordable price. Located in a very quiet street this charming 2 bedroom cottage with bullnose veranda is in need of some works but will make an ideal retreat or investment.

The dwelling consists of open plan living/meals and kitchen area, 2 bedrooms, combined bathroom and laundry. There is a very spacious undercover back deck area which could be made into another living space which has easy access with ramps from two entries. A large bungalow is fantastic for the extra family members or guests sleeping over. The garage is of single size with concrete floor. The property is fenced and has mature established gardens. Corinella is a very popular and growing township and some vacant blocks are selling at this price so this is definitely a must to inspect. Stroll to the shop, park, lawn bowls, tennis courts and community centre. Easy commute to CBD with dual lane highway and within 25 minutes to major shopping centre and Phillip Island.

Disclaimer - We have obtained all information in this document from sources we believe to be reliable. However, we cannot guarantee its accuracy. Prospective purchasers are advised to carry out their own investigations. [www.1stre.com.au](http://www.1stre.com.au)

2 1 1 670 m2

<b>Price</b>	SOLD
<b>Property Type</b>	Residential
<b>Property ID</b>	2377
<b>Land Area</b>	670 m2

### Agent Details

Faye Bennett - 0409 803 605

### Office Details

San Remo  
127 Marine Pde San Remo VIC 3925  
Australia  
03 5678 5408



The above information provided has been furnished to us by the vendor/s. We have not verified whether or not that information is accurate and do not have any belief in one way or the other in its accuracy. We do not accept any responsibility to any person for its accuracy and do no more than pass it on. All interested parties should make and rely

upon their own inquiries in order to determine whether or not this information is in fact accurate.